

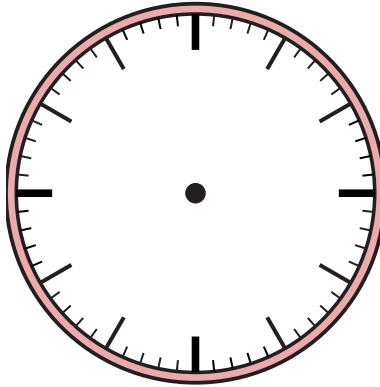


Draw the hour and minute hand on the clock so it represents the time shown.

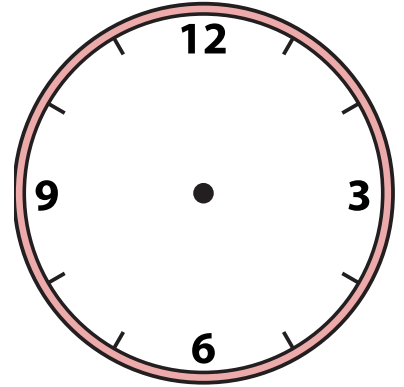
1) 10:50



2) 10:25



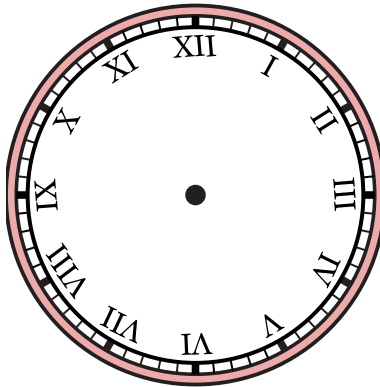
3) 11:12



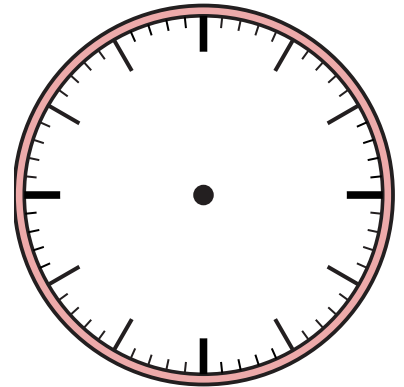
4) 3:39



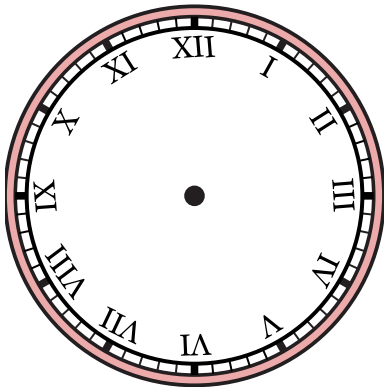
5) 3:54



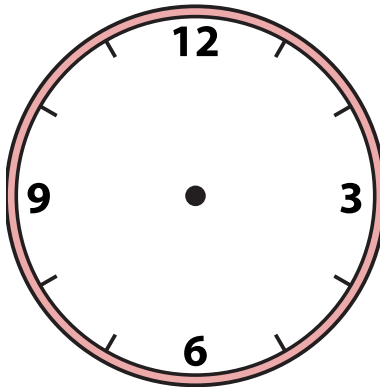
6) 9:04



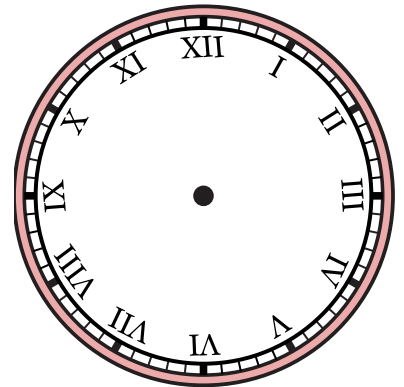
7) 6:18



8) 1:10



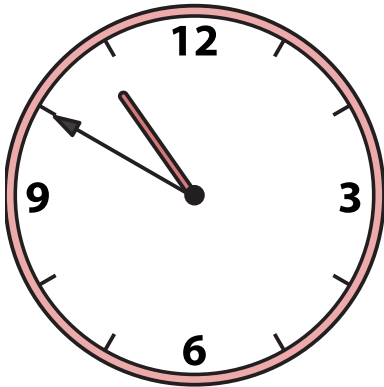
9) 12:30



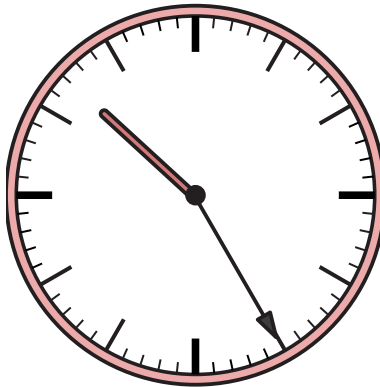


Draw the hour and minute hand on the clock so it represents the time shown.

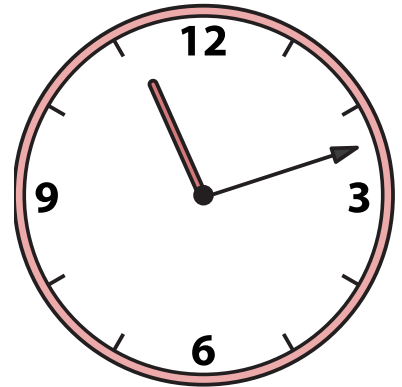
1) 10:50



2) 10:25



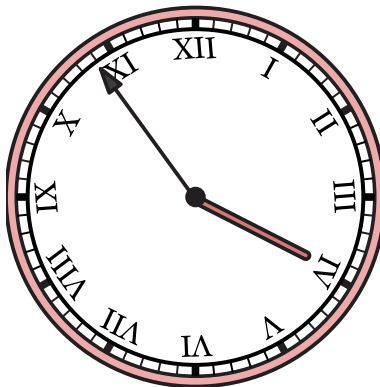
3) 11:12



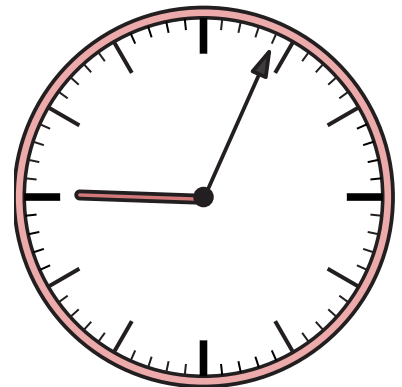
4) 3:39



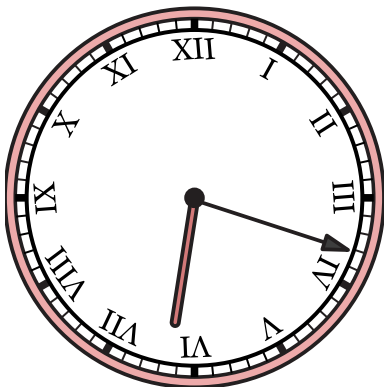
5) 3:54



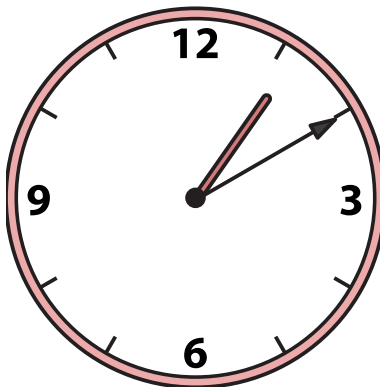
6) 9:04



7) 6:18



8) 1:10



9) 12:30

