

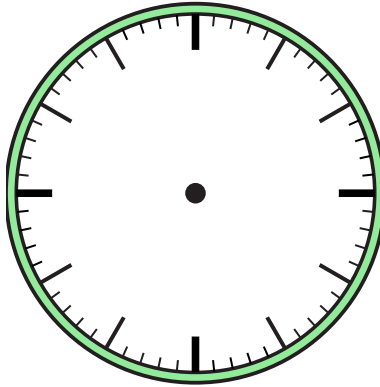


Draw the hour and minute hand on the clock so it represents the time shown.

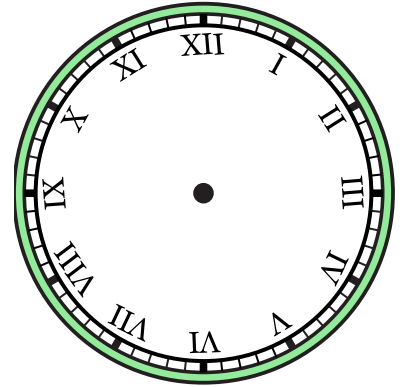
1) 12:00



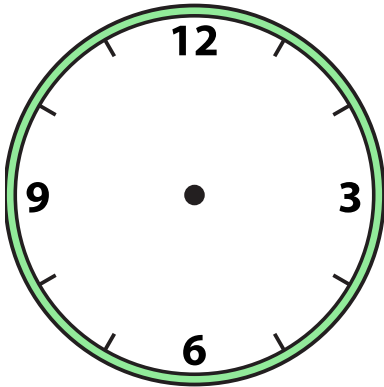
2) 3:30



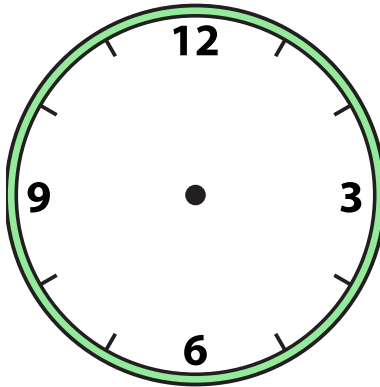
3) 8:00



4) 7:30



5) 2:30



6) 6:00



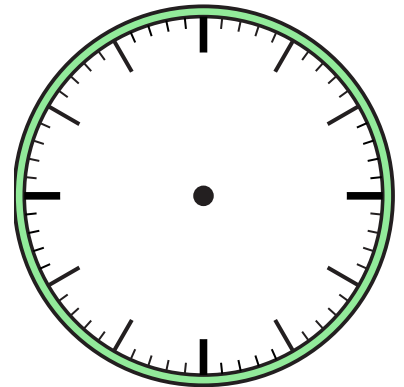
7) 4:00



8) 12:30



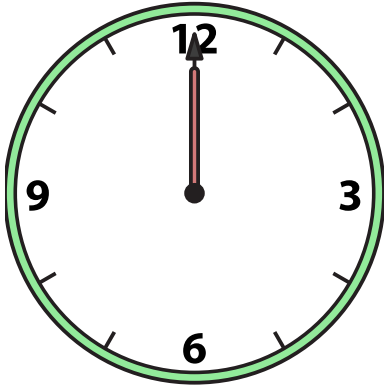
9) 12:30



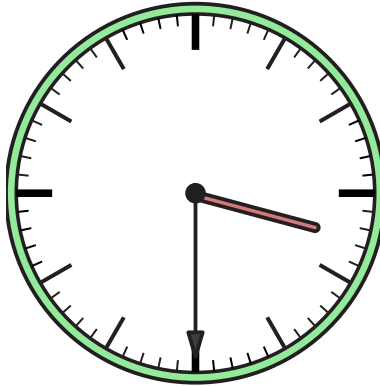


Draw the hour and minute hand on the clock so it represents the time shown.

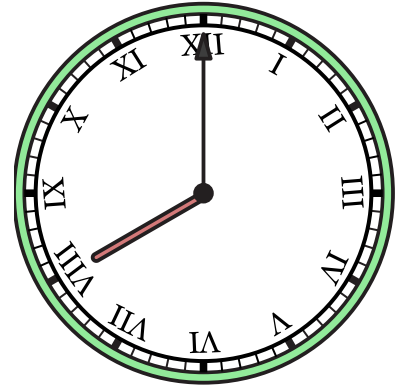
1) 12:00



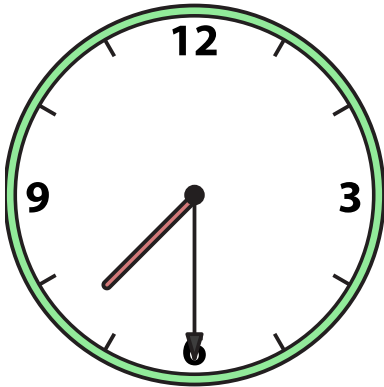
2) 3:30



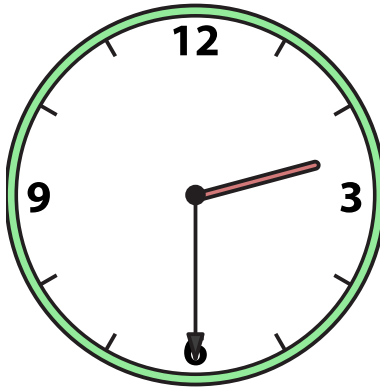
3) 8:00



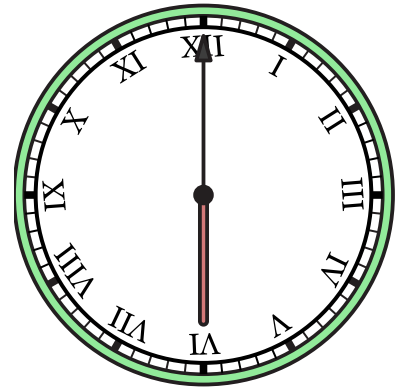
4) 7:30



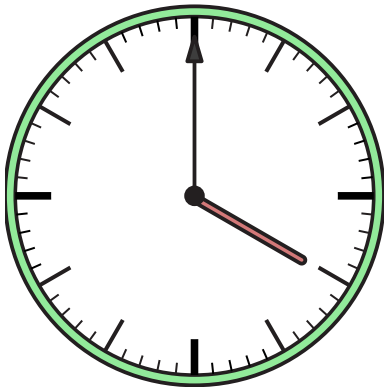
5) 2:30



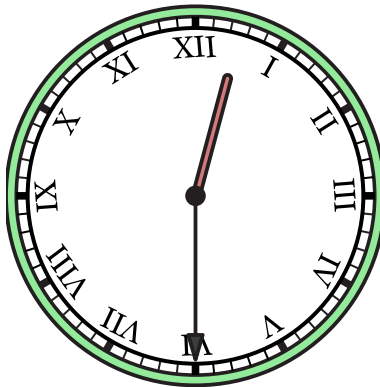
6) 6:00



7) 4:00



8) 12:30



9) 12:30

