



Fill in the grid using the chart.

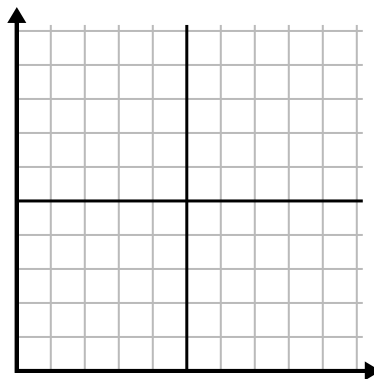
1)

Day	1	2	3	4	5
Meals Sold	1,000	300	900	100	700



2)

Day	1	2	3	4	5	6
Texts Sent	40	30	50	15	25	10



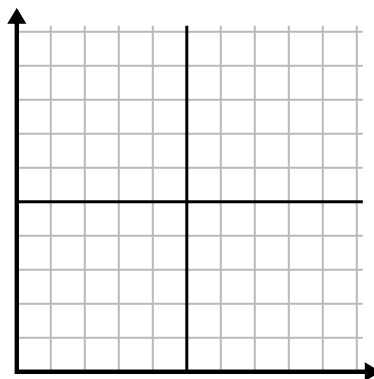
3)

Year	1	2	3	4	5	6
Boxes of Pens Used	10	3	9	1	2	6



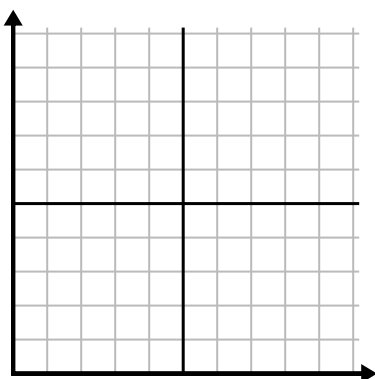
4)

Year	1	2	3	4	5
Ink Cartridges Used	2	18	4	20	12



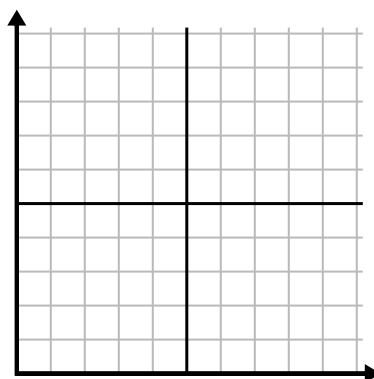
5)

Hour	1	2	3	4	5	6
Amount Sold	6	5	3	4	7	9



6)

Week	1	2	3	4	5	6
Water Used (gallons)	10	60	80	70	20	40

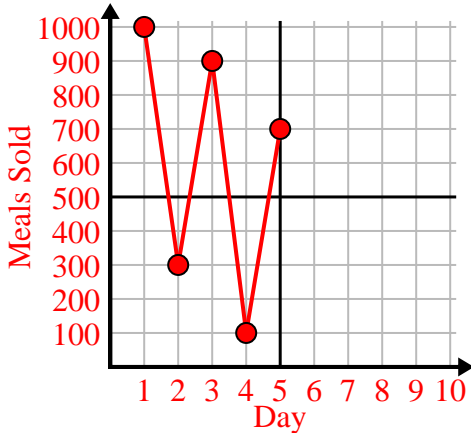




Fill in the grid using the chart.

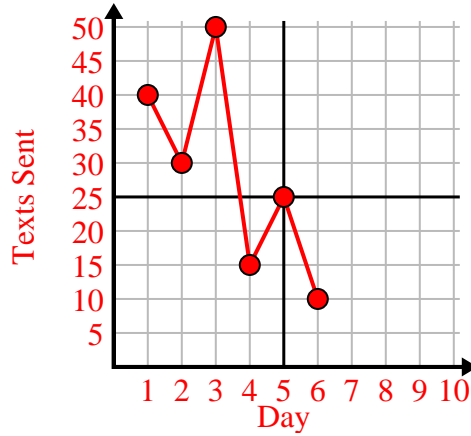
1)

Day	1	2	3	4	5
Meals Sold	1,000	300	900	100	700



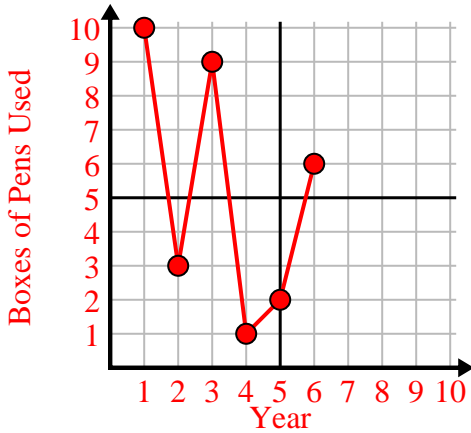
2)

Day	1	2	3	4	5	6
Texts Sent	40	30	50	15	25	10



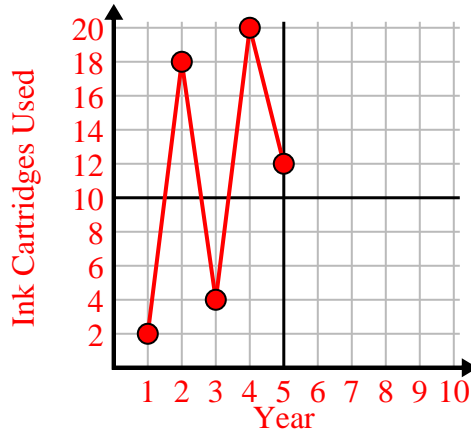
3)

Year	1	2	3	4	5	6
Boxes of Pens Used	10	3	9	1	2	6



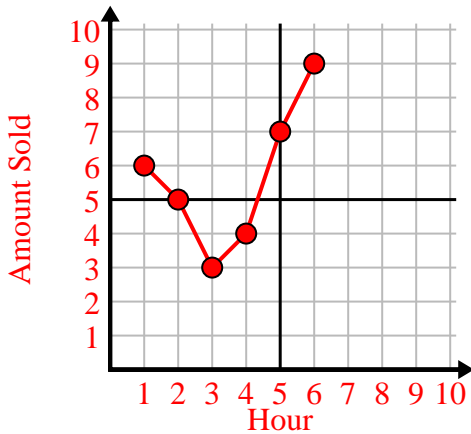
4)

Year	1	2	3	4	5
Ink Cartridges Used	2	18	4	20	12



5)

Hour	1	2	3	4	5	6
Amount Sold	6	5	3	4	7	9



6)

Week	1	2	3	4	5	6
Water Used (gallons)	10	60	80	70	20	40

