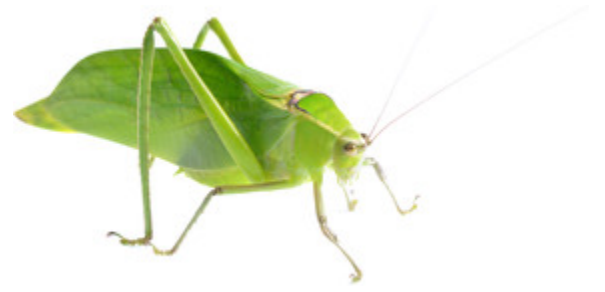




Imagine finding a green creature with long spindly legs, like a grasshopper on stilts. That's a giant long-legged katydid for you! These fascinating insects are a brilliant green color, which helps them hide among the leaves and branches of the trees they live in. They've got the longest legs of any katydid, which makes them excellent jumpers, and their bodies can grow up to 4 inches long. And guess what? Despite their size, these critters are very gentle and harmless.



Now, let's jump into where these amazing creatures live. Giant long-legged katydids are mostly found in the rainforests of Malaysia, a country in Southeast Asia. They prefer hanging out high up in the trees where they can munch on their favorite food - leaves! Their love for tree-top living makes it a bit difficult for us humans to spot them.

Speaking of munching on leaves, it's time to explore the diet of our long-legged friend. These katydids are herbivores, which means they eat plants. Their diet consists mostly of leaves, flowers, bark, and seeds. While they're up in the trees chomping away, they have to stay alert for predators like birds, spiders, and bats.

From being a meal to having babies, let's learn about the life cycle of these cool insects. Female katydids lay their eggs in the ground, which hatch into nymphs. These nymphs look like mini adults, but without wings. As they grow, they shed their skin several times until they become full-grown katydids with wings. So, whether it's their amazing jumping abilities or their super stealthy camouflage, there's no denying that the giant long-legged katydid is an incredible creature!





Solve each problem.

Use the article to answer the question.

- 1) What color is the giant long-legged katydid?
A. Blue
B. Green
C. Orange
D. Black
- 2) Which of the following do giant long-legged katydids eat?
A. Dirt
B. Seeds
C. Berries
D. Meat
- 3) What is the favorite food of the giant long-legged katydid?
A. Leaves
B. Insects
C. Seeds
D. Fruits
- 4) Where do female katydids lay their eggs?
A. On a leaf
B. In a nest
C. In the ground
D. In the water
- 5) Do giant long-legged katydids have wings when they are nymphs?
A. Yes
B. Only female nymphs have wings
C. Only male nymphs have wings
D. No
- 6) Where can you mostly find giant long-legged katydids?
A. Mountains of Australia
B. Deserts of Africa
C. Forests of North America
D. Rainforests of Malaysia
- 7) What kind of diet do the giant long-legged katydids have?
A. Carnivores
B. Herbivores
C. Pescatarians
D. Omnivores
- 8) Which is not a predator of the giant long-legged katydids?
A. Spiders
B. Horses
C. Bats
D. Birds
- 9) What size do giant long-legged katydids grow to be?
A. Up to 4 inches long
B. Up to 10 inches long
C. Up to 8 inches long
D. Up to 6 inches long
- 10) Where do female katydids lay their eggs?
A. Under rocks
B. On tree branches
C. In the water
D. In the ground

Determine if the statements is something the animal would say (W) or it is not something the animal would say (N).

- 11) "I'm the smallest insect in the world."
- 12) "I hate eating leaves, they taste horrible."
- 13) "You might think I'm scary because of my size, but I'm actually very gentle and harmless."



- 14) "My short legs make it difficult for me to jump."
- 15) "I lay my eggs on the tree branches."
- 16) "I enjoy living in the deserts."
- 17) "My menu includes leaves, flowers, bark, and seeds. Yummy, right?"
- 18) "When I was a baby, or a 'nymph' as you might call it, I didn't have any wings. But, as I grew up and shed my skin, I grew these amazing wings."
- 19) "My long, spindly legs aren't just for looks, they make me an excellent jumper!"
- 20) "I love eating meat."
- 21) "I'm a carnivore, I enjoy eating insects."
- 22) "We katydids give birth to live babies."
- 23) "My home is the rainforests of Malaysia, I enjoy the fresh air and the rustling of the leaves."
- 24) "I have no predators."
- 25) "Look at my body, it's so long! I can grow up to 4 inches in length. That's the size of a credit card"
- 26) "Since I only eat plants that would make me a herbivore."
- 27) "Every time I'm snacking on a leaf, I have to be keep my eyes open for sneaky birds who see me as an easy meal."
- 28) "I can be quite aggressive."
- 29) "I'm the color of a fresh, young leaf which makes me blend perfectly among the trees."
- 30) "You know, I lay my eggs in the ground and when they hatch, they look like mini versions of me."

Determine if the statement is a fact or opinion based on the information in the article.

- 31) The giant long-legged katydids consume leaves, flowers, bark, and seeds.
- 32) The jumping skills of giant long-legged katydids are remarkable.
- 33) The giant long-legged katydids inhabit rainforests in Malaysia.
- 34) Giant long-legged katydids look very adorable.
- 35) The giant long-legged katydid is known for having the longest legs among all katydids.
- 36) The way giant long-legged katydids shed their skin several times during growth is absolutely fascinating.
- 37) The female giant long-legged katydids lay their eggs in the ground.
- 38) Despite their large size, giant long-legged katydids are generally harmless.
- 39) Giant long-legged katydids bright green color makes them look more interesting than any other insect.
- 40) Giant long-legged katydids are really cool because they have the longest legs of any katydid.

Determine if the statement is true or false.

- 41) Giant long-legged katydids are herbivores.



- 42) Giant long-legged katydids eat only insects.
- 43) Nymphs of giant long-legged katydids look like adults but without wings.
- 44) Giant long-legged katydids are primarily found in the deserts of Africa.
- 45) Despite their size, these insects are harmless to humans.
- 46) Some giant long-legged katydids have purple and red bodies.
- 47) Giant long-legged katydids prefer to live low to the ground where it is easier to hide.
- 48) The female long-legged katydid lays its eggs in the trees where it lives.
- 49) Giant long-legged katydids have the longest legs of any katydid.
- 50) The giant long-legged katydid can grow up to 4 inches long.

Determine if the sentence is a declarative(d), exclamatory(e), interrogative(i) or imperative(m).

- 51) Are giant long-legged katydids nocturnal or diurnal creatures?
- 52) Their bright green color makes giant long-legged katydids a sight to behold!
- 53) Giant long-legged katydids live in tropical rainforests.
- 54) The size of a giant long-legged katydid is astonishing, they can reach up to 15 cm in length!
- 55) How big do giant long-legged katydids grow?
- 56) What do giant long-legged katydids eat?
- 57) Giant long-legged katydids eat leaves and flowers.
- 58) Giant long-legged katydids are green in color.



Giant Long-Legged Katydid

Name: _____

- | | | |
|-----------|-----------|-----------|
| 1. _____ | 26. _____ | 51. _____ |
| 2. _____ | 27. _____ | 52. _____ |
| 3. _____ | 28. _____ | 53. _____ |
| 4. _____ | 29. _____ | 54. _____ |
| 5. _____ | 30. _____ | 55. _____ |
| 6. _____ | 31. _____ | 56. _____ |
| 7. _____ | 32. _____ | 57. _____ |
| 8. _____ | 33. _____ | 58. _____ |
| 9. _____ | 34. _____ | |
| 10. _____ | 35. _____ | |
| 11. _____ | 36. _____ | |
| 12. _____ | 37. _____ | |
| 13. _____ | 38. _____ | |
| 14. _____ | 39. _____ | |
| 15. _____ | 40. _____ | |
| 16. _____ | 41. _____ | |
| 17. _____ | 42. _____ | |
| 18. _____ | 43. _____ | |
| 19. _____ | 44. _____ | |
| 20. _____ | 45. _____ | |
| 21. _____ | 46. _____ | |
| 22. _____ | 47. _____ | |
| 23. _____ | 48. _____ | |
| 24. _____ | 49. _____ | |
| 25. _____ | 50. _____ | |



Imagine finding a green creature with long spindly legs, like a grasshopper on stilts. That's a giant long-legged katydid for you! These fascinating insects are a brilliant green color, which helps them hide among the leaves and branches of the trees they live in. They've got the longest legs of any katydid, which makes them excellent jumpers, and their bodies can grow up to 4 inches long. And guess what? Despite their size, these critters are very gentle and harmless.



Now, let's jump into where these amazing creatures live. Giant long-legged katydids are mostly found in the rainforests of Malaysia, a country in Southeast Asia. They prefer hanging out high up in the trees where they can munch on their favorite food - leaves! Their love for tree-top living makes it a bit difficult for us humans to spot them.

Speaking of munching on leaves, it's time to explore the diet of our long-legged friend. These katydids are herbivores, which means they eat plants. Their diet consists mostly of leaves, flowers, bark, and seeds. While they're up in the trees chomping away, they have to stay alert for predators like birds, spiders, and bats.

From being a meal to having babies, let's learn about the life cycle of these cool insects. Female katydids lay their eggs in the ground, which hatch into nymphs. These nymphs look like mini adults, but without wings. As they grow, they shed their skin several times until they become full-grown katydids with wings. So, whether it's their amazing jumping abilities or their super stealthy camouflage, there's no denying that the giant long-legged katydid is an incredible creature!





Solve each problem.

Use the article to answer the question.

- 1) What color is the giant long-legged katydid?
A. Blue
B. Green
C. Orange
D. Black
- 2) Which of the following do giant long-legged katydids eat?
A. Dirt
B. Seeds
C. Berries
D. Meat
- 3) What is the favorite food of the giant long-legged katydid?
A. Leaves
B. Insects
C. Seeds
D. Fruits
- 4) Where do female katydids lay their eggs?
A. On a leaf
B. In a nest
C. In the ground
D. In the water
- 5) Do giant long-legged katydids have wings when they are nymphs?
A. Yes
B. Only female nymphs have wings
C. Only male nymphs have wings
D. No
- 6) Where can you mostly find giant long-legged katydids?
A. Mountains of Australia
B. Deserts of Africa
C. Forests of North America
D. Rainforests of Malaysia
- 7) What kind of diet do the giant long-legged katydids have?
A. Carnivores
B. Herbivores
C. Pescatarians
D. Omnivores
- 8) Which is not a predator of the giant long-legged katydids?
A. Spiders
B. Horses
C. Bats
D. Birds
- 9) What size do giant long-legged katydids grow to be?
A. Up to 4 inches long
B. Up to 10 inches long
C. Up to 8 inches long
D. Up to 6 inches long
- 10) Where do female katydids lay their eggs?
A. Under rocks
B. On tree branches
C. In the water
D. In the ground

Determine if the statements is something the animal would say (W) or it it is not something the animal would say (N).

- 11) "I'm the smallest insect in the world."
- 12) "I hate eating leaves, they taste horrible."
- 13) "You might think I'm scary because of my size, but I'm actually very gentle and harmless."



- 14) "My short legs make it difficult for me to jump."
- 15) "I lay my eggs on the tree branches."
- 16) "I enjoy living in the deserts."
- 17) "My menu includes leaves, flowers, bark, and seeds. Yummy, right?"
- 18) "When I was a baby, or a 'nymph' as you might call it, I didn't have any wings. But, as I grew up and shed my skin, I grew these amazing wings."
- 19) "My long, spindly legs aren't just for looks, they make me an excellent jumper!"
- 20) "I love eating meat."
- 21) "I'm a carnivore, I enjoy eating insects."
- 22) "We katydids give birth to live babies."
- 23) "My home is the rainforests of Malaysia, I enjoy the fresh air and the rustling of the leaves."
- 24) "I have no predators."
- 25) "Look at my body, it's so long! I can grow up to 4 inches in length. That's the size of a credit card"
- 26) "Since I only eat plants that would make me a herbivore."
- 27) "Every time I'm snacking on a leaf, I have to be keep my eyes open for sneaky birds who see me as an easy meal."
- 28) "I can be quite aggressive."
- 29) "I'm the color of a fresh, young leaf which makes me blend perfectly among the trees."
- 30) "You know, I lay my eggs in the ground and when they hatch, they look like mini versions of me."

Determine if the statement is a fact or opinion based on the information in the article.

- 31) The giant long-legged katydids consume leaves, flowers, bark, and seeds.
- 32) The jumping skills of giant long-legged katydids are remarkable.
- 33) The giant long-legged katydids inhabit rainforests in Malaysia.
- 34) Giant long-legged katydids look very adorable.
- 35) The giant long-legged katydid is known for having the longest legs among all katydids.
- 36) The way giant long-legged katydids shed their skin several times during growth is absolutely fascinating.
- 37) The female giant long-legged katydids lay their eggs in the ground.
- 38) Despite their large size, giant long-legged katydids are generally harmless.
- 39) Giant long-legged katydids bright green color makes them look more interesting than any other insect.
- 40) Giant long-legged katydids are really cool because they have the longest legs of any katydid.

Determine if the statement is true or false.

- 41) Giant long-legged katydids are herbivores.



- 42) Giant long-legged katydids eat only insects.
- 43) Nymphs of giant long-legged katydids look like adults but without wings.
- 44) Giant long-legged katydids are primarily found in the deserts of Africa.
- 45) Despite their size, these insects are harmless to humans.
- 46) Some giant long-legged katydids have purple and red bodies.
- 47) Giant long-legged katydids prefer to live low to the ground where it is easier to hide.
- 48) The female long-legged katydid lays its eggs in the trees where it lives.
- 49) Giant long-legged katydids have the longest legs of any katydid.
- 50) The giant long-legged katydid can grow up to 4 inches long.

Determine if the sentence is a declarative(d), exclamatory(e), interrogative(i) or imperative(m).

- 51) Are giant long-legged katydids nocturnal or diurnal creatures?
- 52) Their bright green color makes giant long-legged katydids a sight to behold!
- 53) Giant long-legged katydids live in tropical rainforests.
- 54) The size of a giant long-legged katydid is astonishing, they can reach up to 15 cm in length!
- 55) How big do giant long-legged katydids grow?
- 56) What do giant long-legged katydids eat?
- 57) Giant long-legged katydids eat leaves and flowers.
- 58) Giant long-legged katydids are green in color.



- | | | |
|-------------------------|---------------------------|---------------------------------|
| 1. <u>B</u> | 26. <u>true</u> | 51. <u>interrogative</u> |
| 2. <u>B</u> | 27. <u>true</u> | 52. <u>exclamatory</u> |
| 3. <u>A</u> | 28. <u>false</u> | 53. <u>declarative</u> |
| 4. <u>C</u> | 29. <u>true</u> | 54. <u>exclamatory</u> |
| 5. <u>D</u> | 30. <u>true</u> | 55. <u>interrogative</u> |
| 6. <u>D</u> | 31. <u>fact</u> | 56. <u>interrogative</u> |
| 7. <u>B</u> | 32. <u>opinion</u> | 57. <u>declarative</u> |
| 8. <u>B</u> | 33. <u>fact</u> | 58. <u>declarative</u> |
| 9. <u>A</u> | 34. <u>opinion</u> | |
| 10. <u>D</u> | 35. <u>fact</u> | |
| 11. <u>false</u> | 36. <u>opinion</u> | |
| 12. <u>false</u> | 37. <u>fact</u> | |
| 13. <u>true</u> | 38. <u>fact</u> | |
| 14. <u>false</u> | 39. <u>opinion</u> | |
| 15. <u>false</u> | 40. <u>opinion</u> | |
| 16. <u>false</u> | 41. <u>true</u> | |
| 17. <u>true</u> | 42. <u>false</u> | |
| 18. <u>true</u> | 43. <u>true</u> | |
| 19. <u>true</u> | 44. <u>false</u> | |
| 20. <u>false</u> | 45. <u>true</u> | |
| 21. <u>false</u> | 46. <u>false</u> | |
| 22. <u>false</u> | 47. <u>false</u> | |
| 23. <u>true</u> | 48. <u>false</u> | |
| 24. <u>false</u> | 49. <u>true</u> | |
| 25. <u>true</u> | 50. <u>true</u> | |



Solve each problem.

Use the article to answer the question.

- 1) What color is the giant long-legged katydid? (paragraph 1)
A. _____ B. Green
C. _____ D. _____
- 2) Which of the following do giant long-legged katydids eat? (paragraph 3)
A. Dirt B. Seeds
C. _____ D. _____
- 3) What is the favorite food of the giant long-legged katydid? (paragraph 2)
A. Leaves B. Insects
C. _____ D. _____
- 4) Where do female katydids lay their eggs? (paragraph 4)
A. _____ B. In a nest
C. In the ground D. _____
- 5) Do giant long-legged katydids have wings when they are nymphs? (paragraph 4)
A. _____ B. Only female nymphs have wings
C. _____ D. No
- 6) Where can you mostly find giant long-legged katydids? (paragraph 2)
A. Mountains of Australia B. Deserts of Africa
C. _____ D. Rainforests of Malaysia
- 7) What kind of diet do the giant long-legged katydids have? (paragraph 3)
A. _____ B. Herbivores
C. _____ D. _____
- 8) Which is not a predator of the giant long-legged katydids? (paragraph 3)
A. Spiders B. Horses
C. _____ D. _____
- 9) What size do giant long-legged katydids grow to be? (paragraph 1)
A. Up to 4 inches long B. Up to 10 inches long
C. _____ D. _____
- 10) Where do female katydids lay their eggs? (paragraph 4)
A. Under rocks B. _____
C. _____ D. In the ground

Determine if the statements is something the animal would say (W) or it is not something the animal would say (N).

- 11) "I'm the smallest insect in the world." (paragraph 1)



12) "I hate eating leaves, they taste horrible." (paragraph 3)